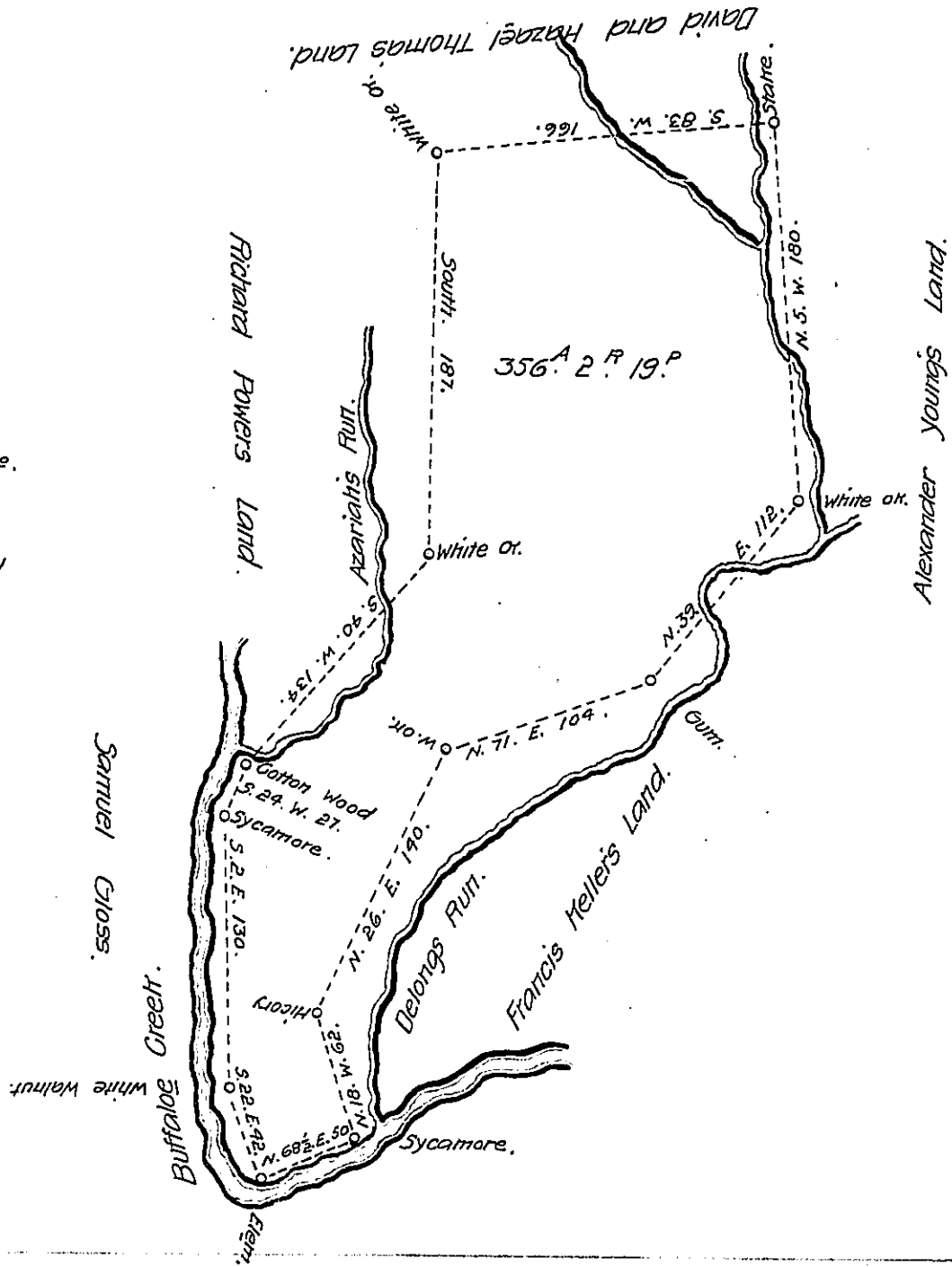


- S. 24. W. 27 Poles Sycamore
- S. 2. E. 130. P. White Walnut.
- S. 22. E. 42. P. Elm.
- N. 68½. E. 50 P. Sycamore.
- N. 18. W. 62 P. Hickory
- N. 26. E. 140 P. White Oak.
- N. 71. E. 104 P. Gum
- N. 39. E. 112. P. White oak.
- N. S. W. 180 P. Dogwood State.
- S. 83. W. 166. P. White oak.
- South. 187. P. White Or.
- S. 40. W. 134 P. to a Cotton wood
the Beginning.



The above is a Draught of a Tract of Land on the waters of Buffalo Creek Between Delongs and Azariah's Runs, Called Bachelor, Containing Three Hundred and Fifty Six Acres Two Rood and Nineteen Perches, with the allowance of Six Per. Cent. Survey^d for Azariah Davis this 16th of April 1785 on a Warrant Dated at Philadelphia The 16th Day of Nov^r 1784.

Jm^o Hoge. D.S.

John Luters Esq^e S.G.

IN TESTIMONY that the above is a copy of the original remaining on file in the Department of Internal Affairs of Pennsylvania, made conformably to an Act of Assembly approved the 16th day of February, 1833, I have hereunto set my Hand and caused the Seal of said Department to be affixed at Harrisburg, this twentieth day of March 1908.

Henry Houch
Secretary of Internal Affairs.